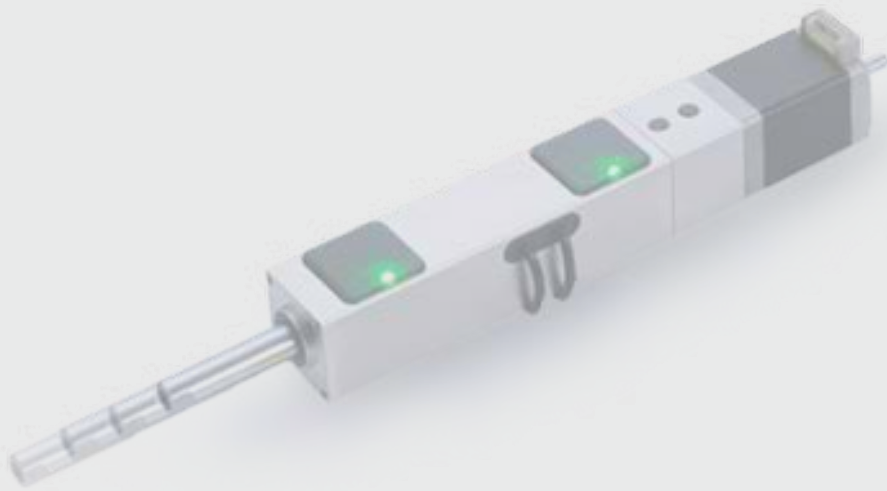


脈動
啟發科技子有限公司

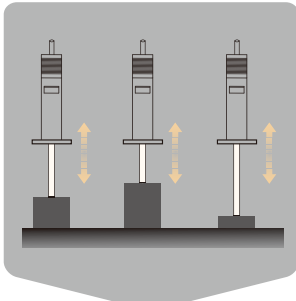


精密電動缸 Precision Electric Actuators

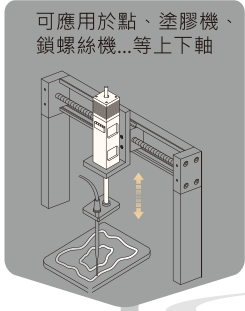
DK

- ① 實現低成本、小體積、一體化的精密移載
- ② 可做精密定位模式設定
- ③ 螺帽採複合材料設計
前後極限內建、美觀、實現一體化控制。

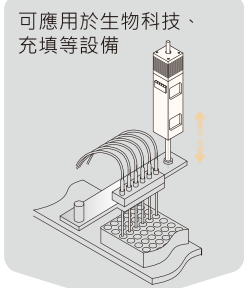




搭配步進型伺服馬達
可執行推壓力量控制設定
(最小設定推力6N)



可應用於點、塗膠機、
鎖螺絲機...等上下軸

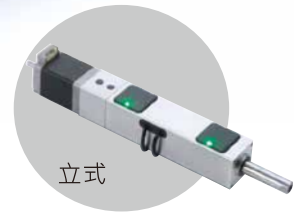


可應用於生物科技、
充填等設備

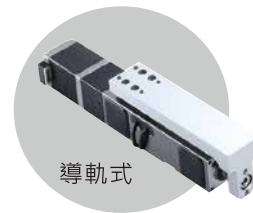
微步進馬達

前後SENSOR內建 (附指示燈)

軸心不旋轉



立式



導軌式



臥式

PATENTED PRODUCT



DK28 S - 40

ST

產品系列型號

S: 附線性滑軌
無: 標準型

有效行程
Effective journey

ST: 開環步進馬達
Stepper Motor
TS: 日本T-SERVO
伺服型步進馬達
Servo Motor (Japan)

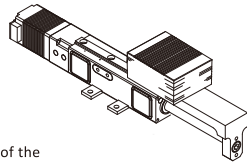


規格	行程長度			
	20	40	60	100
DK28S	20	40	60	100
DK28	30	60	100	

有效行程 Effective journey	mm	20	30	40	60	100
螺桿導程 Lead screw	mm	2				
水平方向最大荷重 Max. level loads	kg	7				
垂直方向最大荷重 Max. vertical loads	kg	5				
重複定位精度 Repeatability	mm	± 0.02				
最大保持力 Max. keep	kg	6 (斷電狀態)				
馬達 Power source		二相步進馬達				

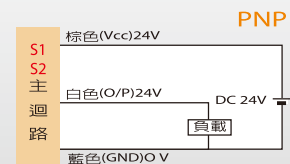
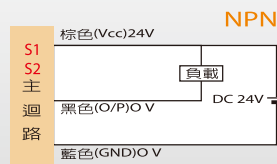
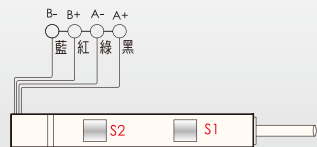
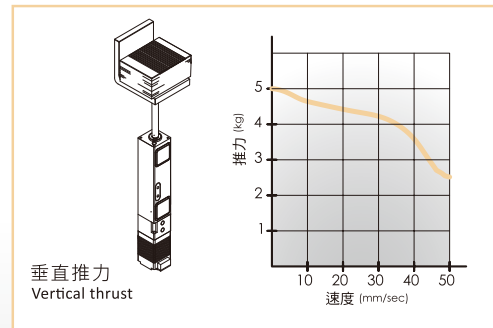
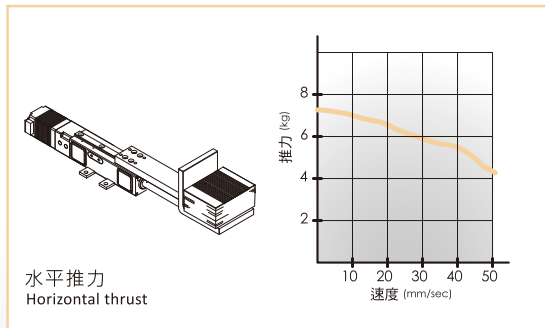
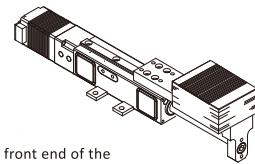
■ 負載置於滑座後端
可負重7kg

The load is placed at the rear end of the slide. The load can be 7kg.



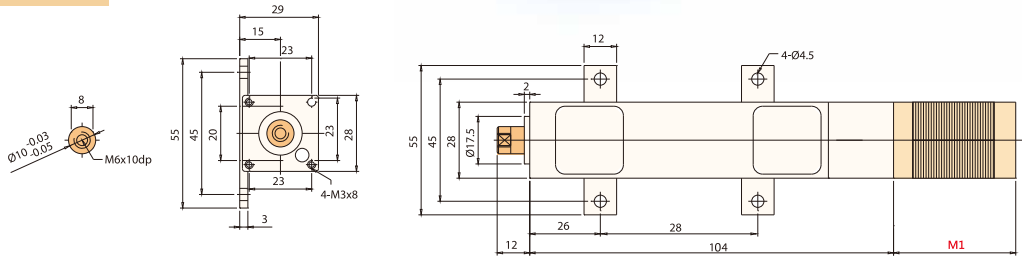
■ 負載置於滑座前端
可負重3kg

The load is placed at the front end of the slider and can carry a weight of 3kg.

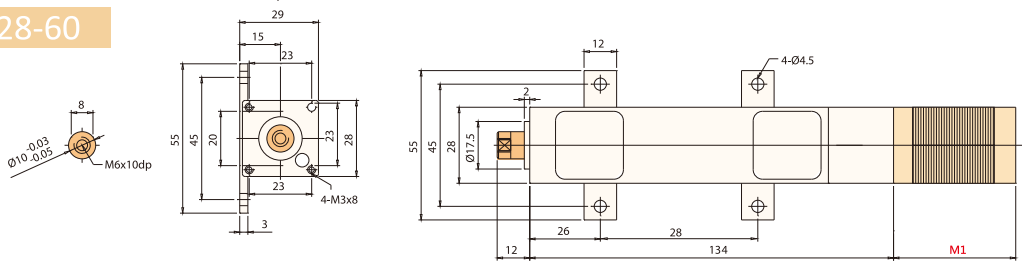




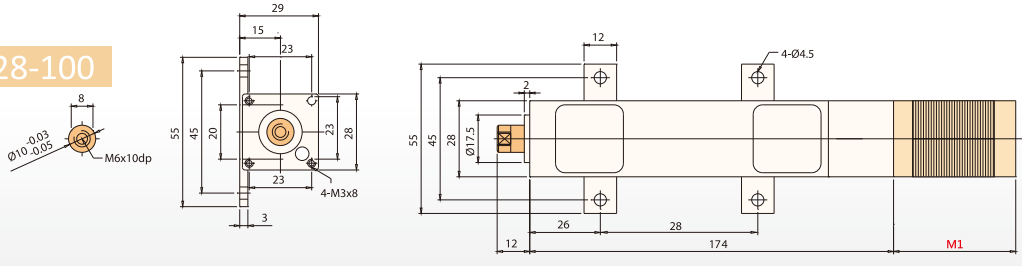
DK28-30



DK28-60



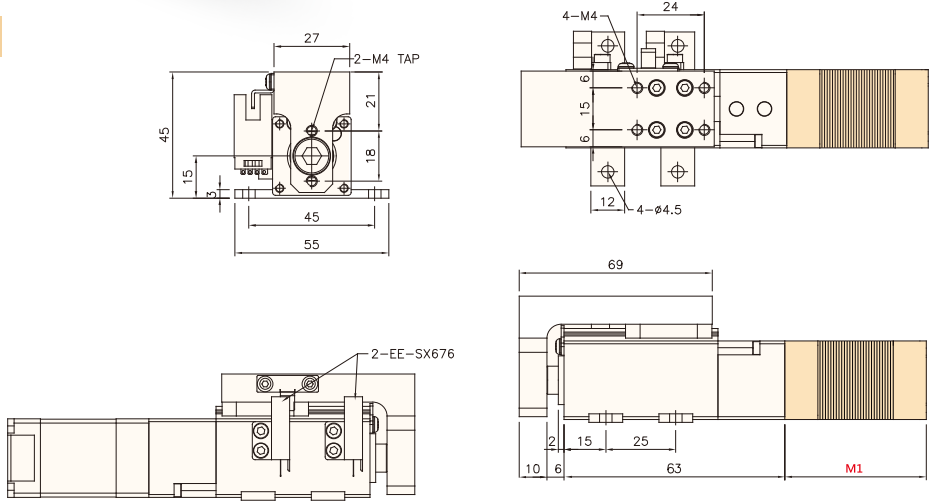
DK28-100



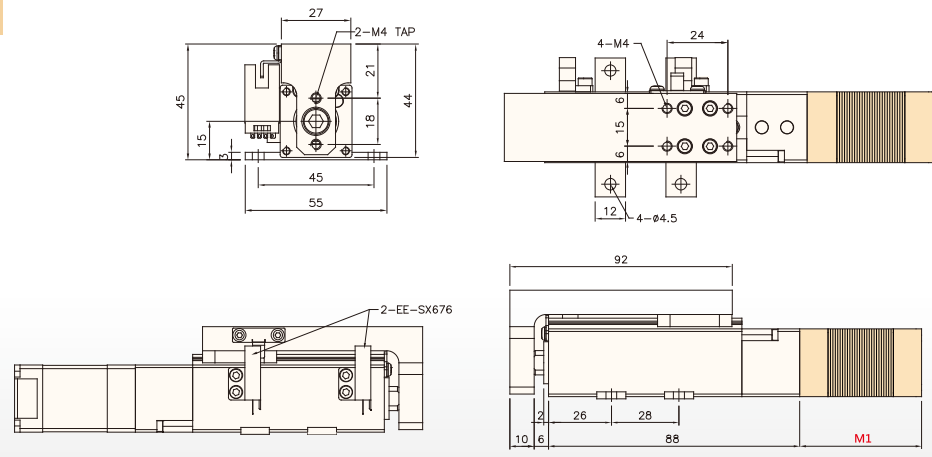
馬達長度(M1)	mm
DK28(S)-□ST	45
DK28(S)-□TS	49



DK28S-20



DK28S-40

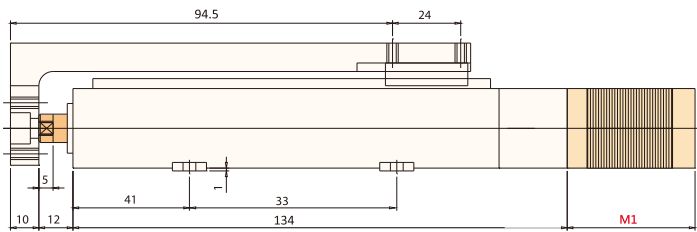
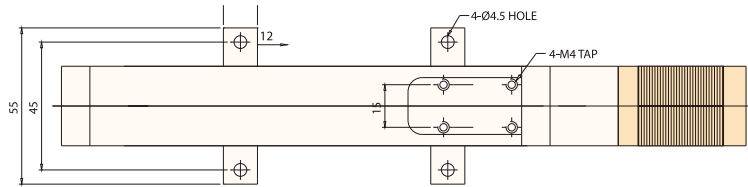
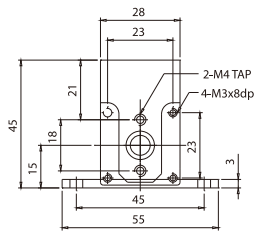


註：光電開關EE-SX676為選購件
Photoelectric Switch (optional)

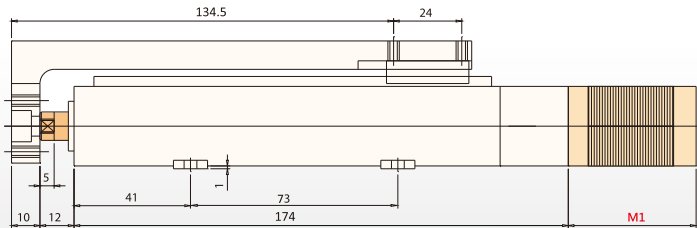
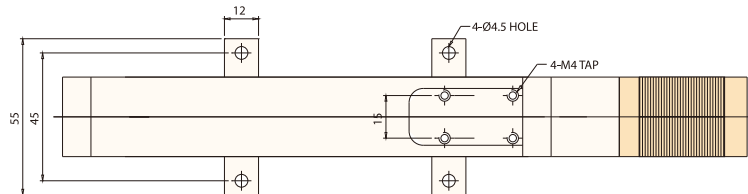
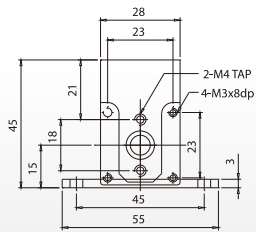
馬達長度(M1)	mm
DK28(S)-□ST	45
DK28(S)-□TS	49



DK28S-60



DK28S-100



馬達長度(M1)	mm
DK28(S)-□ST	45
DK28(S)-□TS	49