

中空旋轉平台

Hollow Rotary Table

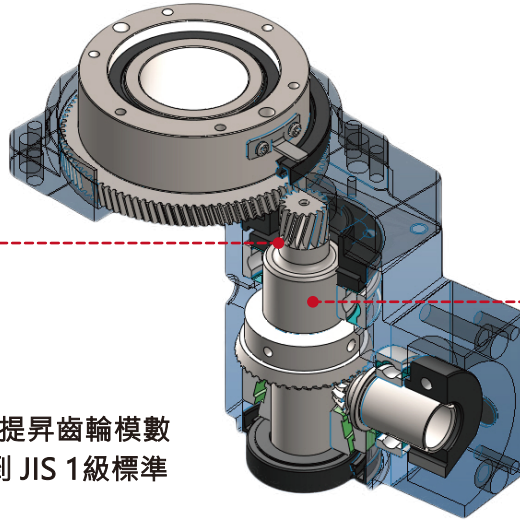


重複精度

Repetitive precision

≤ 10 arc/sec

GD MD



強化型齒係數

Intensive gear modulus

在MD系列的基礎上，再提昇齒輪模數、硬度及研磨精度，達到 JIS 1級標準 (原MD系列為 JIS 2級)

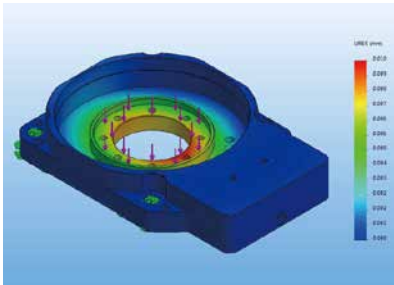
Based on MD series, improving gear modulus, hardness and precesion to achieve standard JIS 1.

二段減速一體化

One-piece gear ratio

小齒主軸與二段齒做同軸一體化製作，大幅提昇同心度及齒輪轉矩。

Improving concentricity and gear torque by manufacturing one-piece small gear and two section gear



齒輪係數電腦模擬分析

Gear modulus simulate analysis

運用設計軟體設計軟體，計算齒輪的運轉力矩及模擬運轉噪音。

It is simulate for gear, hoise and intensity by software.

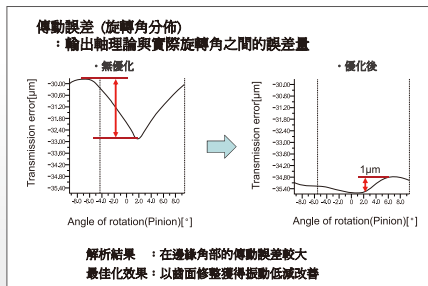
模數 :		為了噪音跟強度的改善，而優化齒形，齒筋形狀在理論上所產生的誤差。 ① 壓力角修整 ② 螺旋角修整 ③ 齒形Crowning修整 ④ 齒形Crowning修整(齒面修整) ⑤ BIAS修整(傾角修整) ⑥ 齒頂修整 ⑦ Relieving修整
壓力角 :		
螺旋角 :		
齒數 :		
齒深 :		
扭力 :		
回轉數 :		

材料剛性、電腦模擬分析

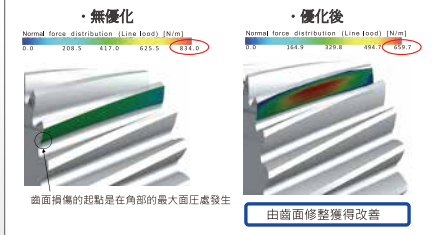
Material rigidity, simulate analysis

旋轉盤機體於設計時，利用軟體分析載重，轉動應力及熱變形等誤差數據分析

We rely on software which analyze loading, heat deformation data for design structure.



齒面設計的解析和效果的有效性

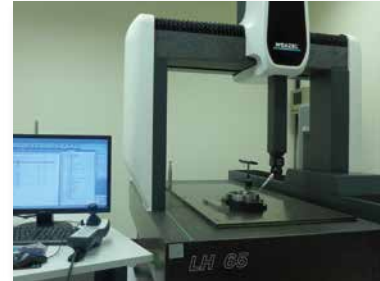


Quality control is our strategy

幾何公差檢驗

Geometric dimensioning and tolerancing inspection

使用3次元儀器，全檢旋轉台組裝後的公差數據。
In order to achieve reliable quality, we rely on the software of material, gear analysis and we have advanced equipment for inspection. Dasen guards a pass and do 100% inspection for the product.

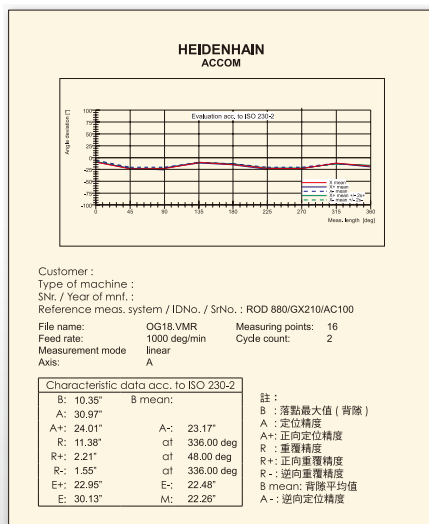


盤面精度檢測 Positioning precision inspection

盤面同心度檢測	盤面旋轉振幅	盤面與底座平行度
Concentricity inspection for table	Amplitude of rotation for table	Parallelism for table and base
$\leq 0.01\text{mm}$	$\leq 0.005\text{mm}$	$\leq 0.015\text{mm}$

旋轉精度檢驗

Heidenhain positioning precision inspection



齒輪背隙及傳動精度經由“海德漢” 角度分析儀檢驗

Gear precision is inspected by
Heidenhain

MD100 R - 8 V2

規格
Table size

60
100
 130
 200
 275


無: 直結馬達
R: 轉向二段減速
P: 直向二段減速

減速比
Ratio

V1 : Ø14-PCD70-M4
 V2 : Ø14-PCD70-M5

馬達規格
Motor type

T1 : Ø8-PCD66.67-M4
 T2 : Ø8-PCD70.71-M4
 T3 : Ø10-PCD70.71-M4
 T4 : Ø6.35-PCD66.67-M4
 T5 : Ø8-PCD70.71-M5

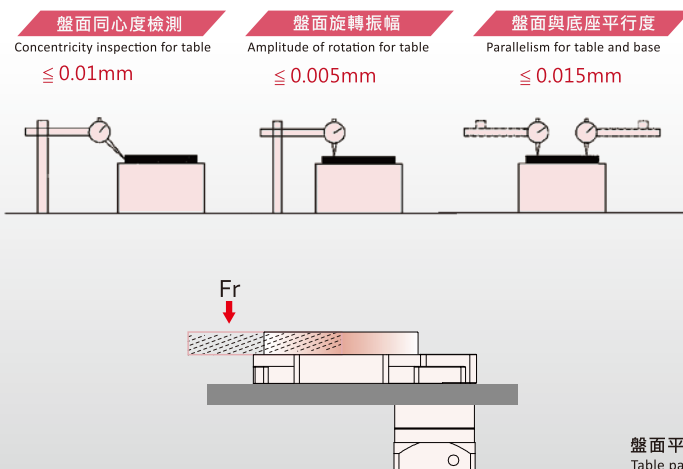


各廠牌200W~400W伺服馬達
各廠牌60型步進馬達

型號 / 規格 Model	MD100	MD100R	MD100P
旋轉平台軸承 Rotation of bearing	圓錐滾子軸承		
容許轉矩 Max. torque	N-m	45	
減速比 Gear ratio	i	16 24	24 32 40
重覆精度 Repetitive precision	arc-sec	≤ 10	≤ 30
定位精度 (相對) Positioning precision	arc-sec	± 15	± 30
容許徑向力 (Fr) Max. radial force	N-m	50	
精度壽命 Lifetime of precision	hr	20000	
保護等級 Protection rating		IP40	
質量 Weight	kg	2.5	3.7

· 原點Sensor規格(選購) OMRON EE-SX672

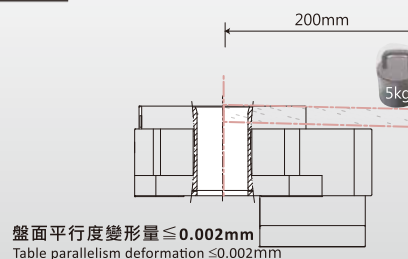
盤面精度檢測 Positioning precision inspection



特別需求 Special request

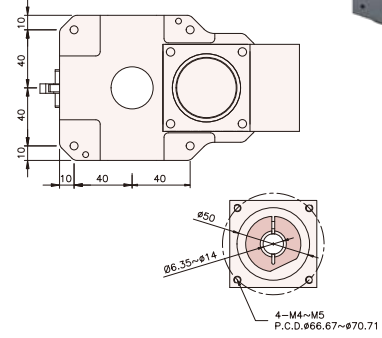
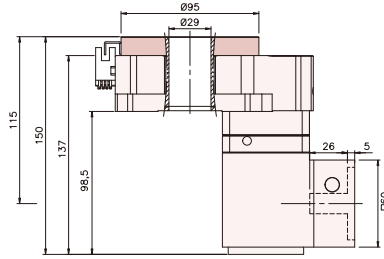
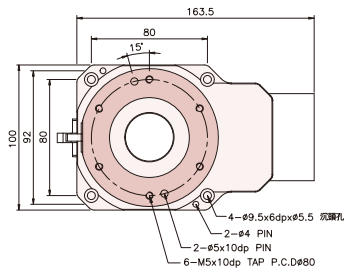
- ▲ 盤面同心度 · 可製作 ≤ 0.005 mm 精度 · 請各別洽談
- ▲ 盤面旋轉振幅 · 可製作 ≤ 0.002 mm 精度 · 請各別洽談
- ▲ 盤面平行度 · 可製作 ≤ 0.002 mm 精度 · 請各別洽談

The customization of ≤0.002mm rotation amplitude / ≤0.002mm parallelism is also available. For special needs, please contact with us.



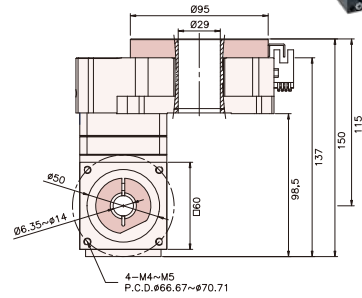
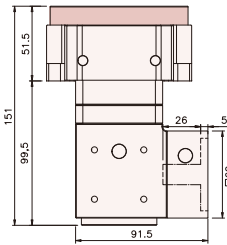
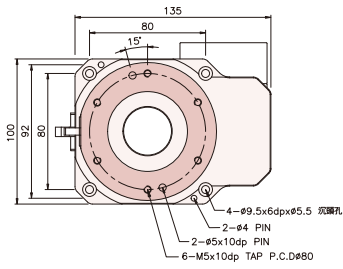
MD100R

型號識別
 MD100R-16
 MD100R-24



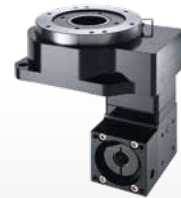
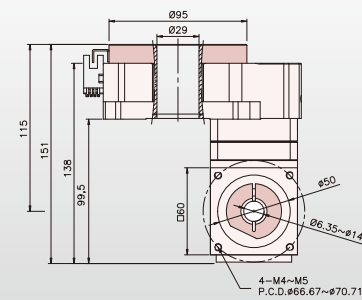
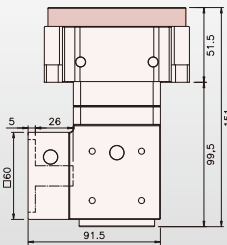
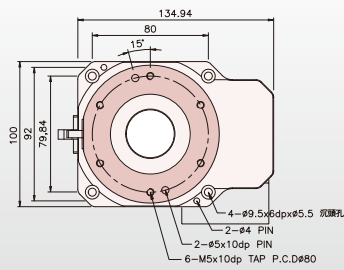
MD100R-R

型號識別
 MD100R-R16
 MD100R-R24



MD100R-L

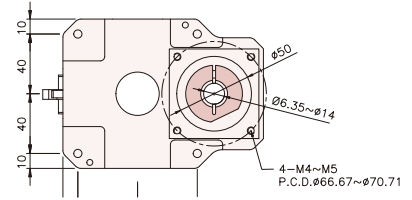
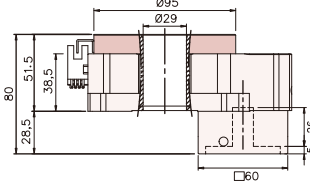
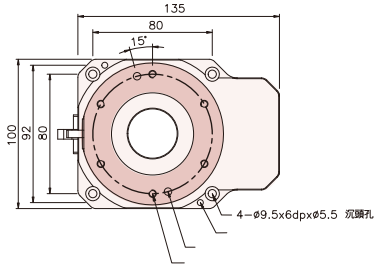
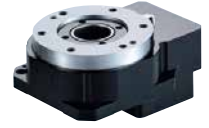
型號識別
 MD100R-L16
 MD100R-L24



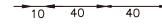
MD100

型號識別

MD100-8V1	MD100-8T1
MD100-8V2	MD100-8T2
MD100-8V3	MD100-8T3
	MD100-8T4
	MD100-8T5



2-ø4 PIN
2-ø5x10dp PIN
6-M5x10dp TAP P.C.Dø80



MD100P

型號識別

MD100P-24□
MD100P-32□
MD100P-40□

